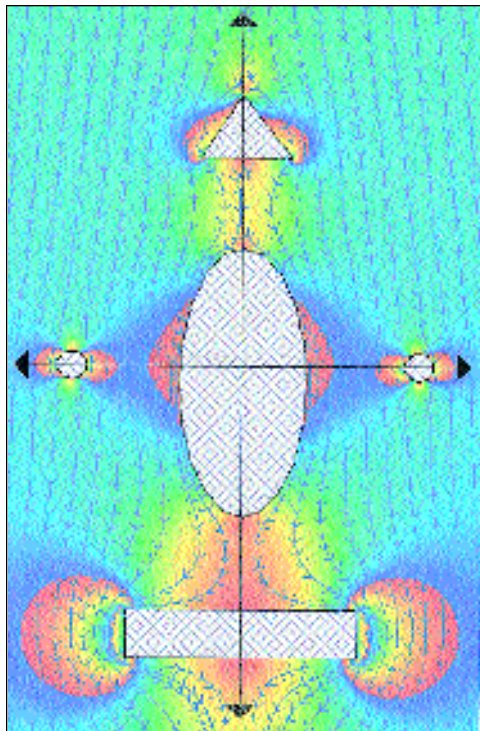


New Software Flow Visualization

Dynaflow has released 2DFLOW^{plus} V2.5, its upgraded program for visualizing flows around user-drawn submerged



bodies. The software uses potential flow theory and the singularity method to study hydrodynamic-flow problems and a wide variety of classic fluid-mechanics problems. It allows the user to simulate and visualize complex flows. 2DFLOW^{plus} V2.5 also enables users to insert solid boundaries and objects of arbitrary shapes; study internal and external flows; compute and view flow trajectories, equipotential lines, pressures, and velocity vectors; and define and compute circulation, force, and flux.

Dynaflow, Inc.
7210 Pindell School Road
Fulton, MD 20759-9752
Circle No. 180 on Reader Service Card

New Tecplot Release

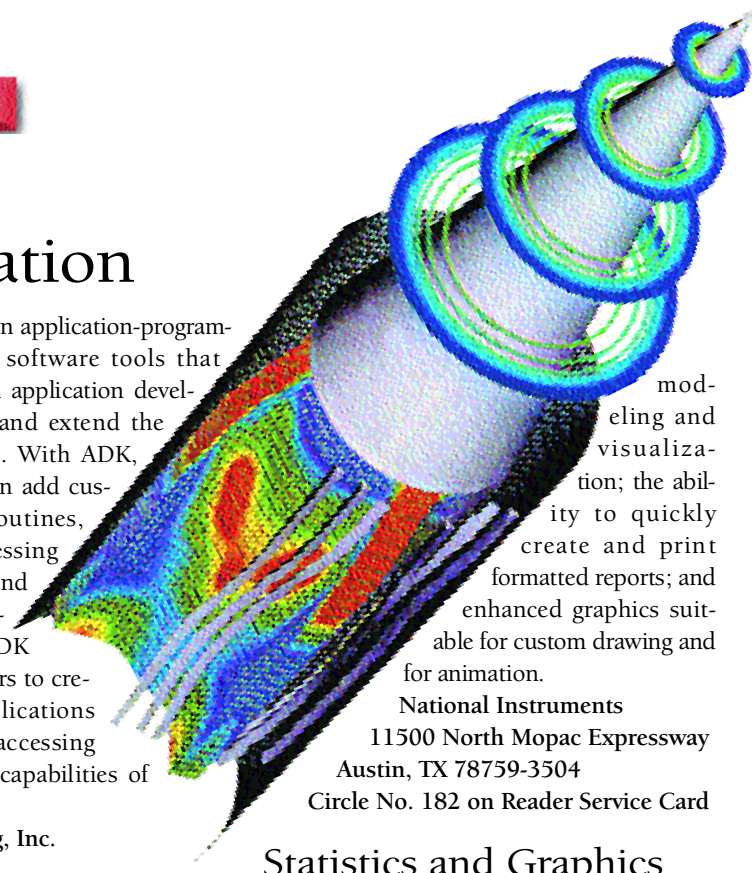
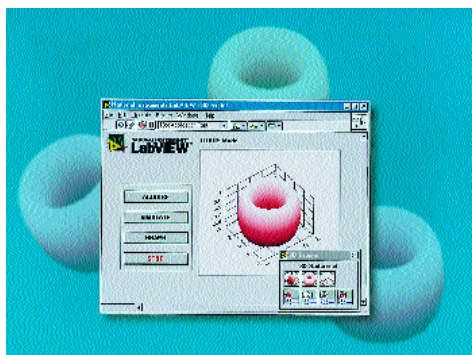
Amtec Engineering has announced the availability of Tecplot 7.5, which provides data-visualization and computational fluid-dynamics solutions. The new release introduces Tecplot ADK (Add-on Developer's

Kit), which includes an application-programming interface and software tools that enable end-users and application developers to customize and extend the functions of Tecplot. With ADK, for example, users can add custom input-output routines, specialized preprocessing capabilities, and extend the visualization capabilities of Tecplot. ADK also enables developers to create stand-alone applications that are capable of accessing all the visualization capabilities of Tecplot.

Amtec Engineering, Inc.
P.O. Box 3633
Bellevue, WA 98009-3633
Circle No. 181 on Reader Service Card

LabView 5.1

National Instruments has unveiled LabView 5.1, the latest version of its popular software aimed at engineers and scientists who want to develop specific measurement and automation applications. The company says its new product improves connectivity across the Internet and allows users to share data quickly with other Internet-enabled applications; provides better performance with less memory usage; and seamlessly integrates the mathematics and interactive analysis capabilities of The MathWorks' MATLAB and National Instruments' HiQ. Other features that help users improve productivity when developing interfaces include three-dimensional graph control that allows flexible



modeling and visualization; the ability to quickly create and print formatted reports; and enhanced graphics suitable for custom drawing and for animation.

National Instruments
11500 North Mopac Expressway
Austin, TX 78759-3504
Circle No. 182 on Reader Service Card

Statistics and Graphics

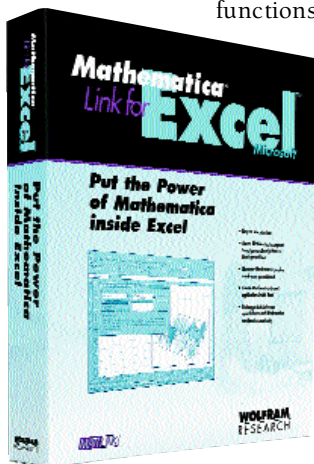
SPSS has released SYSTAT 8.0, its latest statistics-and-graphics package. The software features advanced statistical techniques that save users time and yield reliable results. The new version includes several new features—including additional spatial statistics that evaluate geostatistical models and a revamped browser interface—that enable complex statistical analyses and data management with graphic capabilities. Other features include quicker navigation of complicated statistical analyses; a data-editing system that allows dragging and dropping of variables, resizing of columns, and changing of display formats and systems; and 32-bit architecture for stability. System requirements are Windows 95 or NT 4.0, a 486 or higher processor, a minimum of 16 MB of RAM and 25 MB of storage space, and an SVGA monitor.

SPSS, Inc.
233 South Wacker Drive, 11th Floor
Chicago, IL 60606-6307
Circle No. 183 on Reader Service Card

Mathematica-Excel

Wolfram Research closed out 1998 by bringing Mathematica Link for Excel to market. The add-on package is an easily used interface between Microsoft Excel and Mathematica, a fully integrated technical computing system used by many scientists

and engineers. The new software greatly expands the kinds of calculations available within an Excel spreadsheet, giving users access to several mathematical and statistical functions. Wolfram says



the interface will enable users to send large amounts of data from Excel to Mathematica to perform sophisticated analyses that Excel cannot do alone. It requires Mathematica 3 or higher, and

works with individual copies or across networks with licensed versions of Mathematica. The software is compatible on Windows with Excel 95 and Excel 97, and on Macintosh systems with Excel 5.0 and Excel 98.

Wolfram Research, Inc.

100 Trade Center Drive
Champaign, IL 61820-7237

Circle No. 184 on Reader Service Card

Data Acquisition Catalog

IOtech has released the DAQtionary Data Acquisition Catalog and Software Demo CD, which features the company's portable PC-based data acquisition systems, signal-conditioning and expansion options, temperature and voltage scanners, and IEEE 488 interfaces. The package also includes an intuitive software-selection guide, which allows users to review tutorial-based demonstrations of IOtech's newly enhanced Out-of-the-Box software, data-logging and control software, and third-party software support. Running DAQtionary requires a personal computer with a 486 processor or higher, at least 16 MB of RAM, and Windows 98, 95, NT, or 3.1, or a Macintosh running system 7.1 or higher.

IOtech, Inc.

25971 Cannon Road
Cleveland, OH 44146

Circle No. 185 on Reader Service Card



Data Acquisition System

DATAQ Instruments' new USB-based data acquisition system, the DI-700, provides 1,000 samples per second at 16-bit resolution. Each of the DI-700's 16 single-ended or 8 differential analog input channels can be individually programmed, and each is capable of measuring ± 10 V over four gain ranges. The lightweight, portable, and self-contained unit offers eight programmable digital input lines and eight programmable digital output lines. The DI-700 allows the simultaneous measurement of a wide range of signals; channel-by-channel software selection of sample rate, gain, single-ended/differential operation, and signal averaging; and comes with WinDaq/Lite, a 16-channel version of WinDaq/Pro waveform recording software, which operates at a maximum throughput of 1 kHz.

DATAQ Instruments, Inc.

150 Springside Drive, Suite B220
Akron, OH 44333-2473

Circle No. 186 on Reader Service Card

Composite Materials

Goodfellow, specialists in supplying metals and materials in small amounts for research and design, offers selected composite materials from both metal-matrix and resin-matrix composites. These materials include aluminum/copper and aluminum/lithium metal-matrix composites, generally supplied as sheets, rods, or tubes; aramid/polyphenylene sulphide, aramid/vinyl ester, carbon/carbon, carbon/aramid, carbon/epoxy, carbon/vinyl ester, and polyethylene/polyethylene resin-matrix composites, normally sold as sheets, rods, tubes, or fabric (carbon/aramid); and Nb/Ti+Cu superconducting composite wire. Goodfellow typically fills orders of a few grams to a few kilograms, but the company

can supply larger quantities of metals and material, and it manufactures items to specific requirements.

Goodfellow Corp.

800 Lancaster Avenue
Berwyn, PA 19312-1780

Circle No. 187 on Reader Service Card

Pulsed Dye Laser

Lambda Physik has introduced SCANmate OG, a tunable pulsed dye laser for use by spectroscopists performing critical work in the ultraviolet, visible, and near infrared. The laser features an integrated autocalibration system that includes eight-channel data acquisition and comprehensive spectroscopic



software. SCANmate OG allows semi- and fully automatic calibration related to atomic-line positions measured by an integrated hollow cathode lamp. The system is continuously tunable from 320 nm to 1,036 nm and produces 95 mJ at 590 nm. Existing SCANmate lasers can be upgraded to include the new spectroscopic system.

Lambda Physik, Inc.

3201 West Commercial Boulevard
Fort Lauderdale, FL 33309

Circle No. 188 on Reader Service Card

This section is based on information supplied by the manufacturers and in some cases by independent sources. *The Industrial Physicist* can assume no responsibility for its accuracy. To facilitate inquiries, a Reader Service Card is attached between pages 38 and 39.